

1. Horn in F

2. Konzert für Klavier und Orchester

Friedrich Rademacher

1. Satz

Allegro ♩ = 104

5

p

10

4

mf

6

24

f

4

34

8

fp *f* *fp*

47

2

f

55

rit.

62

a tempo ♩ = 104

p

8

pp *p*

75

8

5

mf

92

3

4

104

f *mf*

10

p

118

118-124: Musical staff in treble clef with key signature of two sharps (F# and C#). The staff contains measures 118 to 124. Measures 118 and 119 are whole rests. Measures 120-124 contain eighth and quarter notes. Dynamics: *mf* (measures 120-122) and *f* (measures 123-124).

125

125-132: Musical staff in treble clef with key signature of two sharps. Measures 125-132. Measures 125-126 contain eighth notes. Measures 127-128 are whole rests. Measures 129-132 contain eighth and quarter notes, ending with a triplet of eighth notes. Dynamics: *mf* (measures 129-132). A crescendo hairpin is present under measures 129-132.

133

133-164: Musical staff in treble clef with key signature of two sharps. Measures 133-164. Measures 133-134 are whole rests. Measures 135-136 contain a 7-measure rest. Measures 137-138 contain quarter notes. Measures 139-140 contain eighth notes. Measures 141-142 contain a 21-measure rest. Dynamics: *p* (measures 137-140) and *pp* (measures 141-142). A crescendo hairpin is present under measures 139-140.

165

ppp poco rit. $\text{♩} = 104$ a tempo

165-175: Musical staff in treble clef with key signature of two sharps. Measures 165-175. Measures 165-166 contain a 3-measure rest. Measures 167-168 contain a 5-measure rest. Measures 169-175 contain eighth and quarter notes. Dynamics: *f* (measures 169-175).

176

176-188: Musical staff in treble clef with key signature of two sharps. Measures 176-188. Measures 176-177 contain eighth notes. Measures 178-179 are whole rests. Measures 180-181 contain a 9-measure rest. Measures 182-183 contain eighth notes. Measures 184-185 contain quarter notes. Measures 186-187 contain eighth notes. Measures 188 is a whole rest. Dynamics: *p* (measures 176-188).

189

189-198: Musical staff in treble clef with key signature of two sharps. Measures 189-198. Measures 189-190 contain a 5-measure rest. Measures 191-192 contain eighth notes. Measures 193-194 contain quarter notes. Measures 195-196 contain eighth notes. Measures 197-198 contain quarter notes. Dynamics: *f* (measures 191-192), *p* (measures 193-194), and *p* (measures 197-198).

199

199-207: Musical staff in treble clef with key signature of two sharps. Measures 199-207. Measures 199-200 contain eighth notes. Measures 201-202 contain a 3-measure rest. Measures 203-204 contain eighth notes. Measures 205-206 contain quarter notes. Measures 207 is a whole rest. Dynamics: *f* (measures 203-204) and *fp* (measures 205-206).

208

208-220: Musical staff in treble clef with key signature of two sharps. Measures 208-220. Measures 208-209 are whole rests. Measures 210-211 contain a 7-measure rest. Measures 212-213 contain quarter notes. Measures 214-215 contain eighth notes. Measures 216-217 contain quarter notes. Measures 218-219 contain eighth notes. Measures 220 is a whole rest.

221

221-224: Musical staff in treble clef with key signature of two sharps. Measures 221-224. Measures 221-222 contain quarter notes. Measures 223-224 contain eighth notes. The staff ends with a 3/4 time signature.

Larghetto $\text{♩} = 50$ 2. Satz

6

p *pp*

243 5 16

pp *p* *mf*

268 2

p *p* *mf*

276 rit. a tempo $\text{♩} = 50$ 2 8

p *p*

291 4 5 9 7

poco rit. a tempo $\text{♩} = 68$ rit.

p *p*

317 Tempo 1 $\text{♩} = 50$ 20

pp

342 2

pp

3. Satz

Allegro scherzando $\text{♩} = 132$

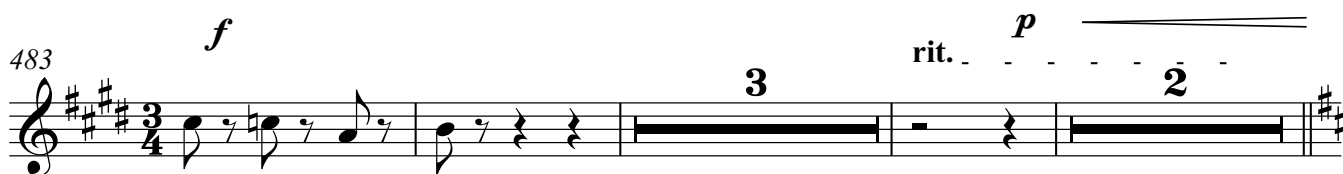
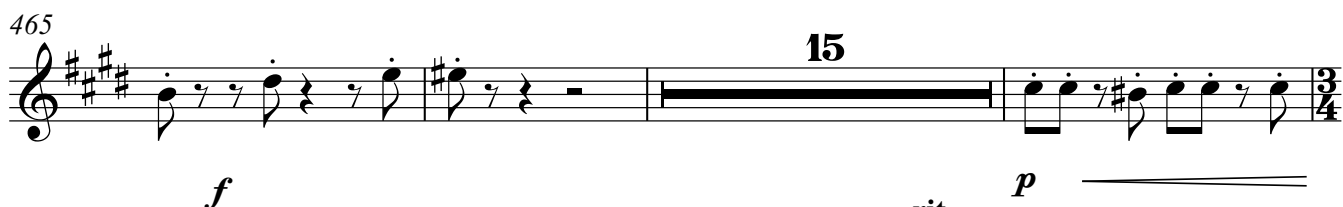
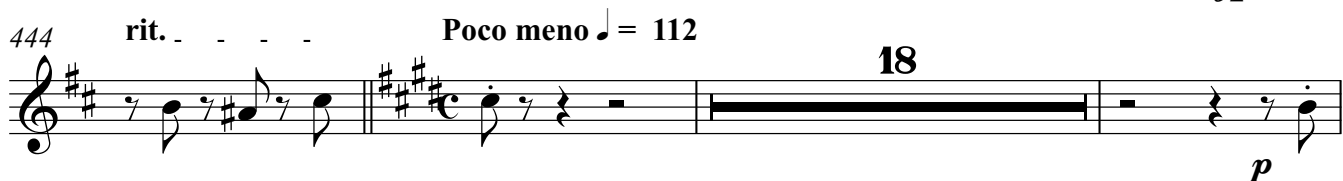
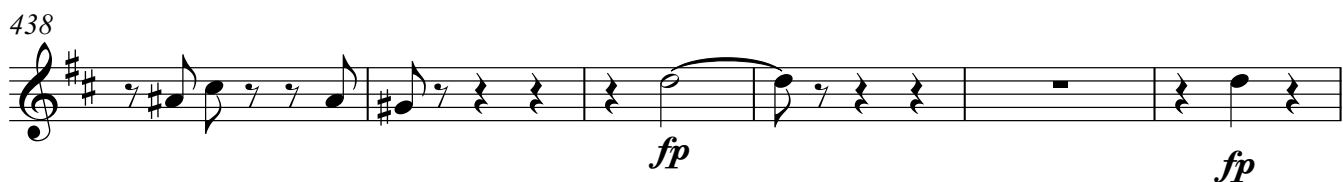
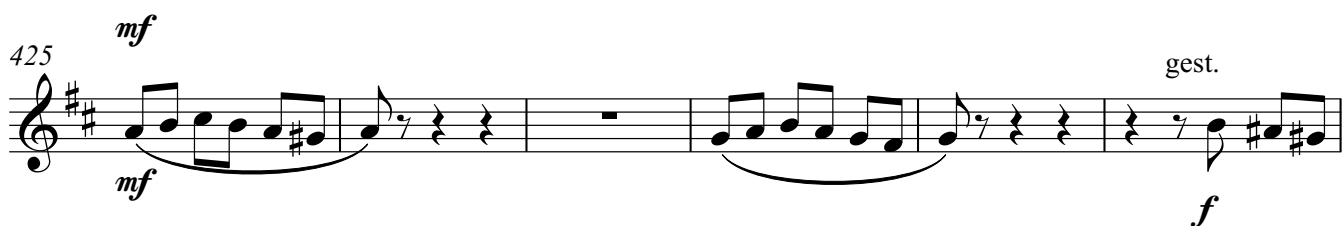
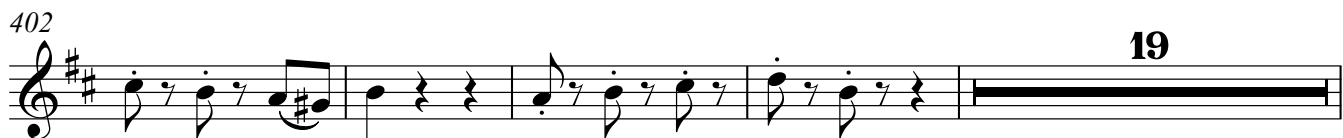
6 10

p *p cresc.*

369 17

f 9

390



555

p *sfz* *p* *sfz* *f*

561

f molto rit..

3

567 a tempo $\text{♩} = 132$ **2** molto rit.. Im Tempo

sfz

19'24.7"